

# PRINTING INSTRUCTIONS FOR THIS PATTERN

1. It is best to use **Adobe Reader** to view or print this pattern.
2. Set your printer to **borderless** printing to ensure the lines print to the edge of the paper where intended, as illustrated by the pattern printing layout sample.
3. Print the page with the test squares first. The test squares must measure **5 cm (2 in)** to ensure the pattern pieces are the correct size.
4. Print the **9-page pattern** on **A4** paper and at **100%** if the test square measurements are correct.
5. Align the pages on a sheet of paper in numerical order, as illustrated by the pattern printing layout sample.
6. Match all the pattern lines and grain lines up.
7. Use a glue stick or sticky tape to secure the pattern pieces on the sheet of paper.
8. Once the pattern is secured on the paper, you can either trace a copy of the pattern onto a sheet of paper and cut it out, or you can cut the printed pieces out directly.

## FABRIC REQUIREMENTS

This pattern is for a bust size of **92 cm (36 in)**, waist **74 cm (29 in)**, and hip **100 cm (39 in)**.

You will need about **1 m x 150 cm (1 yard x 58 in)** of prewashed knit fabric and **¼ m (10 in)** of contrasting knit fabric for the sleeve cuffs and neckband. Clear elastic or a strip of fusible knit interfacing to stabilize the shoulder seams.

## SEWING TIPS

Use a stretch or ballpoint needle when sewing knits with the sewing machine. Use a **4 mm** stretch twin needle to sew the hem.

A narrow zigzag stitch (**1-1½** wide x **2-2½** long) can be used to sew or baste the seams of knit fabrics. Test the zigzag stitch width and length on your knit fabric sample first.

Test Square

5 X 5 cm

Test Square

2 X 2 in

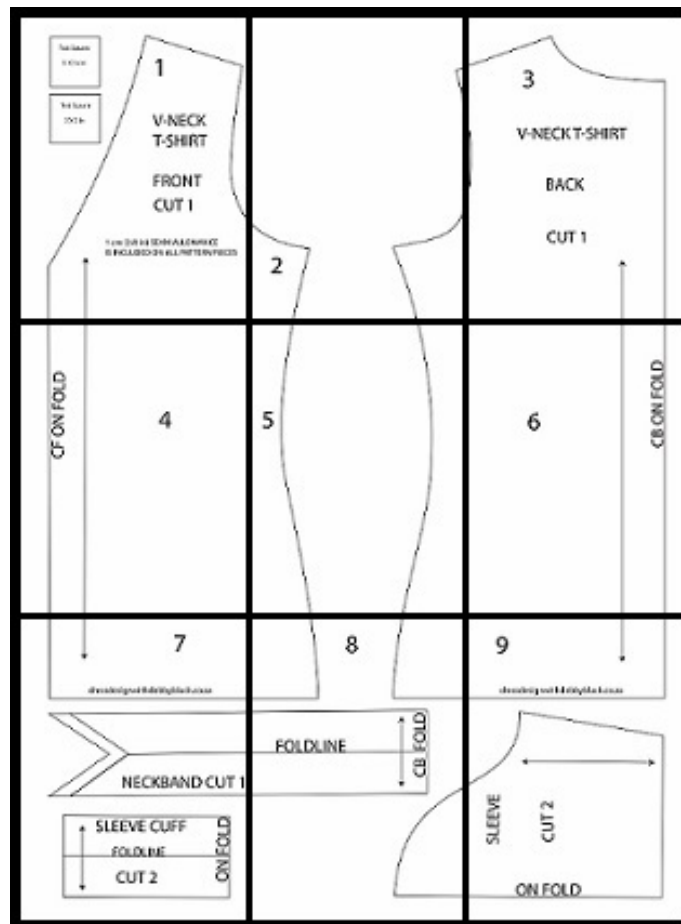
1

V-NECK  
T-SHIRT

FRONT  
CUT 1

1 cm ( $\frac{3}{8}$  in) SEAM ALLOWANCE IS  
INCLUDED ON ALL PATTERN PIECES  
2 cm ( $\frac{3}{4}$  in) HEM ALLOWANCE IS  
INCLUDED

## PATTERN PRINTING LAYOUT SAMPLE





3

V-NECK T-SHIRT

BACK

CUT 1

CF ON FOLD

4

[dressdesignwithdebbyblack.co.za](http://dressdesignwithdebbyblack.co.za)

← MAXIMUM STRETCH →

5



6

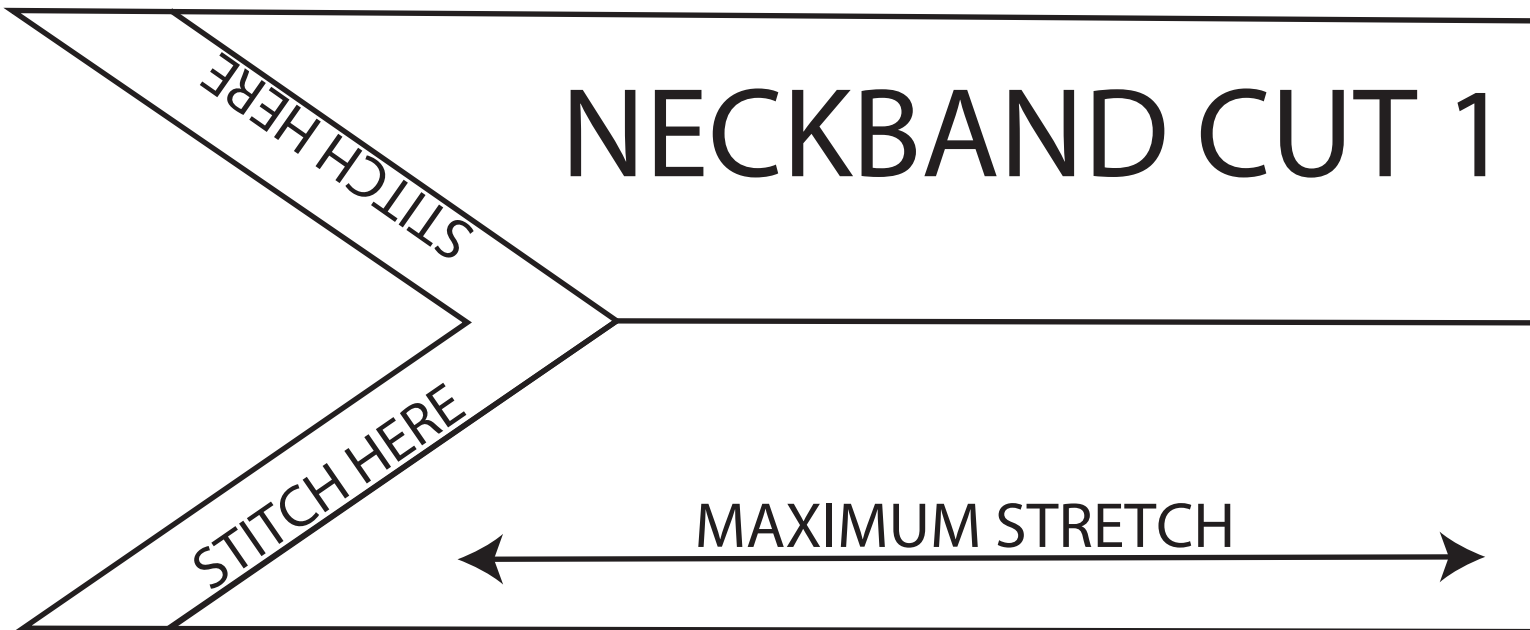
[dressdesignwithdebbyblack.co.za](http://dressdesignwithdebbyblack.co.za)

← MAXIMUM STRETCH →

CB ON FOLD

7

## NECKBAND CUT 1



## SLEEVE CUFF

FOLDLINE

CUT 2

MAXIMUM STRETCH

[dressdesignwithdebbyblack.co.za](http://dressdesignwithdebbyblack.co.za)

ON FOLD

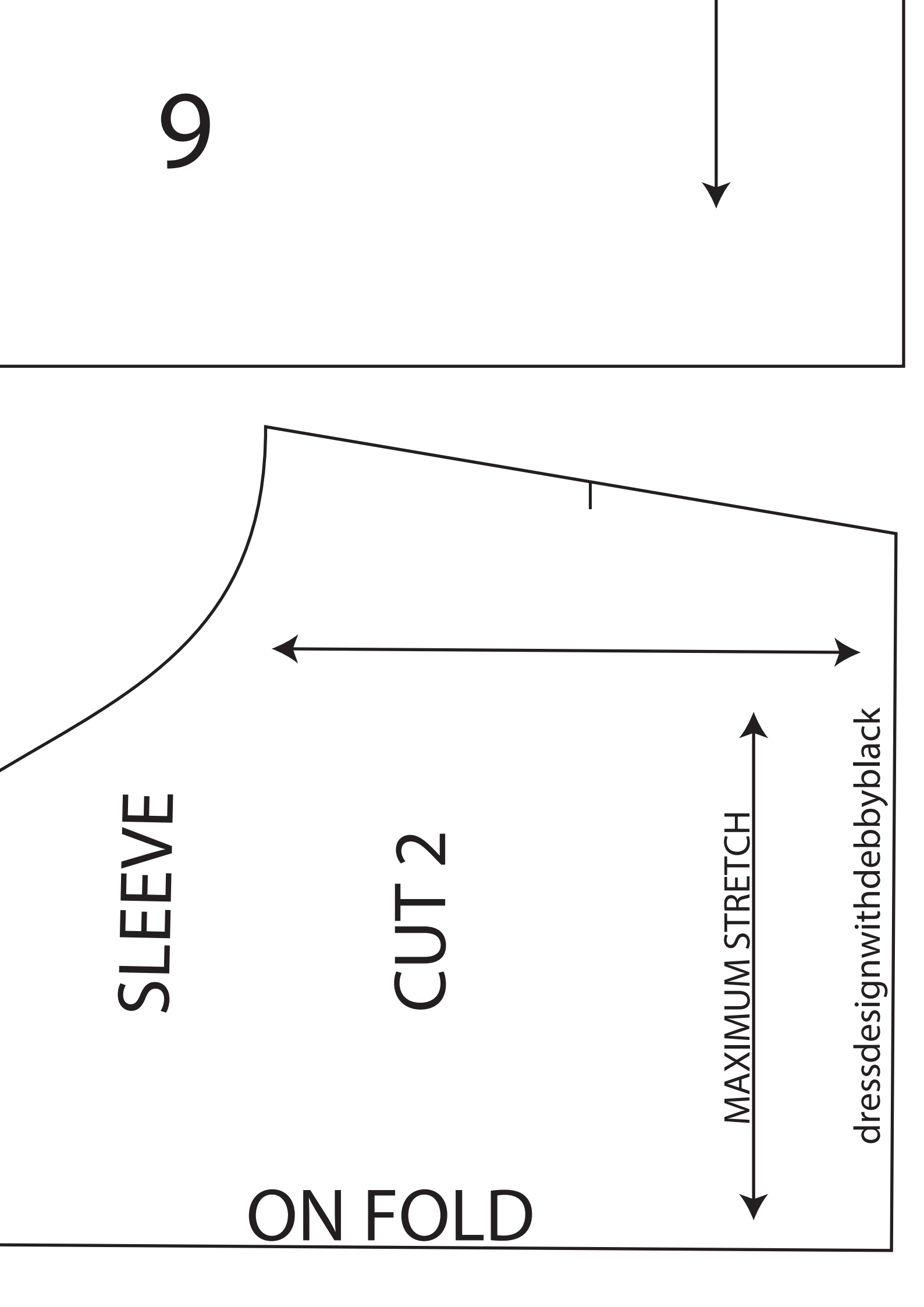


8

FOLDLINE

[dressdesignwithdebbyblack.co.za](http://dressdesignwithdebbyblack.co.za)

CB FOLD



9

SLEEVE

CUT 2

ON FOLD

MAXIMUM STRETCH

dressdesignwithdebbyblack